

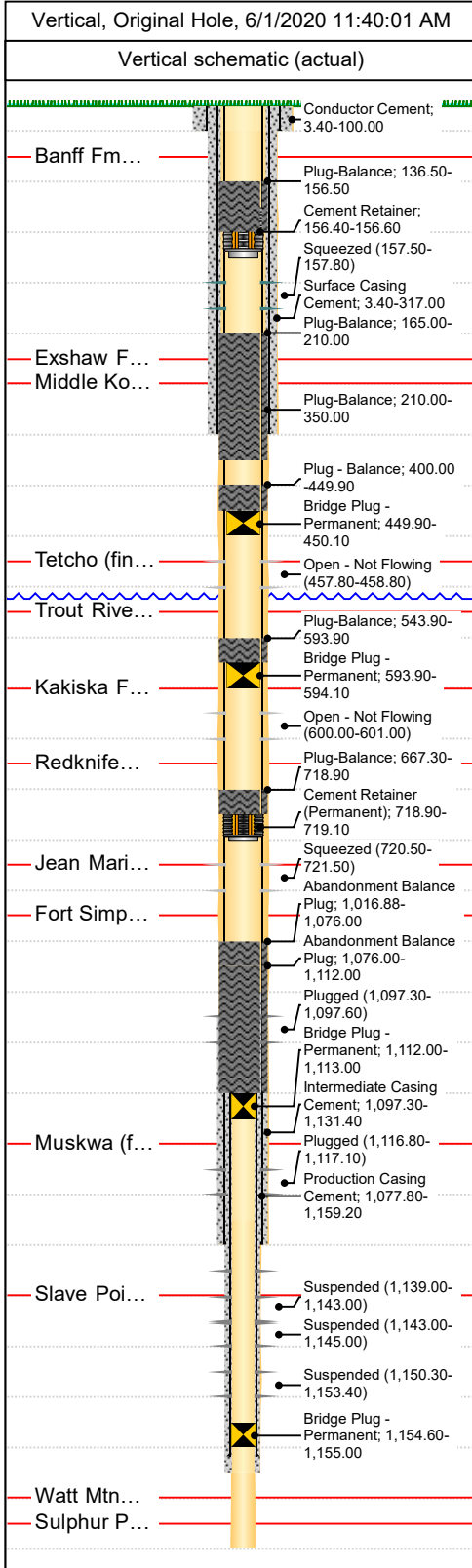









Tubing and Rods (Schematic)

Paramount
resources ltd.

Well Name: HOME SIGNAL CSP CELIBETA NO. 2 (H-78)

API/UWI 300/H-78-6010-12200/0	Surface Legal Location H-78-6010-12200	License # NWT-OL-2014-014	Field Name	State/Province NorthWest Territories
Well Configuration Type Vertical	Original KB Elevation (m) 488.90	KB-Ground Distance (m) 3.40	KB-Casing Flange Distance (m) 3.81	KB-Tubing Head Distance (m)



<des> set at <depth>mKB on <dtmrun>									
Tubing Description			Set Depth (mKB)		Run Date			Lateral Position	
Item #	Item Description	Joints	Length (m)	OD (in)	ID (in)	Wt (lb/ft)	Grade	Top (mKB)	Btm (mKB)
Comment									
Other In Hole									
Description			OD (in)	Top Depth (mKB)		Bottom Depth (mKB)		Run Date	
Bridge Plug - Permanent			4.4094	1,154.60		1,155.00		3/17/1960 00:00	
Comment									
Description			OD (in)	Top Depth (mKB)		Bottom Depth (mKB)		Run Date	
Bridge Plug - Permanent			4.4094	1,112.00		1,113.00		3/15/1990 00:00	
Comment									
Description			OD (in)	Top Depth (mKB)		Bottom Depth (mKB)		Run Date	
Cement Retainer (Permanent)			6.1417	718.90		719.10		3/1/2020 17:19	
Comment									
10K - 177.8 mm Cement Retainer									
Description			OD (in)	Top Depth (mKB)		Bottom Depth (mKB)		Run Date	
Bridge Plug - Permanent			6.1417	593.90		594.10		3/4/2020 11:30	
Comment									
10K - 177.8 mm Kappa Permanent Bridge Plug									
Description			OD (in)	Top Depth (mKB)		Bottom Depth (mKB)		Run Date	
Bridge Plug - Permanent			6.1417	449.90		450.10		3/5/2020 12:16	
Comment									
10K - 177.8 mm Kappa Permanent Bridge Plug									
Description			OD (in)	Top Depth (mKB)		Bottom Depth (mKB)		Run Date	
Cement Retainer			6.1417	156.40		156.60		3/7/2020 12:50	
Comment									
10K 177.8 mm Weatherford Cement Retainer.									
<String Description?> set at <Set Depth?> on <Run Date?>									
String Description					Run Date			Set Depth (mKB)	
Item Description			Joints	Length (m)	OD (in)	Wt (lb/ft)	Grade		
Comment									
Perforation Statuses									
Top (mKB)	Top (TVD) (mKB)	Btm (mKB)		Btm (TVD) (mKB)		Date	Status		
157.50		157.80				3/7/2020	Squeezed		
457.80		458.80				3/4/2020	Open - Not Flowing		
600.00		601.00				3/3/2020	Open - Not Flowing		
720.50		721.50				3/1/2020	Squeezed		
1,097.30		1,097.60				2/15/1960	Plugged		
1,116.80		1,117.10				2/15/1960	Plugged		
1,139.00		1,143.00				3/15/1960	Standing		
1,139.00		1,143.00				3/15/1990	Suspended		
1,143.00		1,145.00				3/15/1960	Standing		
1,143.00		1,145.00				3/15/1990	Suspended		
1,150.30		1,153.40				3/15/1960	Standing		
1,150.30		1,153.40				3/15/1990	Suspended		